



HOME
LINES



¹/₂ **oceanic**
AND GLORIOUS
NASSAU
IN THE BAHAMAS

Welcome to your Ship of Paradise and the Isle of Joy

Nowhere, but nowhere in all the world, is there a resort to compare with glorious Nassau, jewel of the joyous Bahamas... Here's where your dreams can literally come true. And now you have the most fantastically pleasurable way to get there, aboard the world's newest and most glamorous cruise ship—the 'Oceanic'—herself a floating isle of Paradise as heavenly as any island in the sun could be...

Everything in Nassau and the islands conspires to delight your holiday heart: the excitement of visiting a bit of Old Britain in a tropical setting—intriguing old pirate haunts—miles and miles of pink talcum-powder beaches fringed by palms and casuarinas, water-sports of every kind in a perfect climate—deep-sea fishing, golf, tennis, racing, riding, driving, hiking, in conditions you've always dreamed about—night-club native entertainment and calypso music—bargain-hunting for European and Asiatic luxury goods at way-down low prices—and a warm and friendly welcome from a fine and hospitable people...

And always the same wonderful weather of the balmy Bahamas, a magic compounded of gentle sun, blue skies, Gulf Stream freshness, turquoise transparent waters, cool-night winds, and gently bracing air from a thousand miles of the South Atlantic...

HOME
LINES

IN ALL THE WORLD...ON ALL THE OCEANS...
NEVER BEFORE A SHIP LIKE



%oceanic



YOUR SHIP OF PARADISE

A new world of pleasure and adventure awaits you aboard the newest, largest and most glamorous ship ever built expressly for cruising the year round. She's the sparkling symbol of all the marine arts, sciences and skills of modern Europe brought together breath-takingly for your cruising happiness.

Here are some of the outstanding features: A unique retractable, transparent roof over a Lido deck boasting the vastest Lido swimming-pool afloat that transforms at night into a cascading coloured fountain for all-weather night-or-day frolic... 22 gloriously decorated lounges, bars, social rooms and activity areas... almost a mile of fun and rest decks... every ship sport known to man... four great orchestras... 60 suites and super-cabins... hundreds of extra-comfort staterooms... all cabins with private bath and/or shower facilities... a wonderful team of expert entertainers and hostesses under the inspired direction of the maestro of all cruise directors...

And some 'never before' attractions too: new-type stabilizers and special devices fore and aft to reduce pitching and rolling to the calmest minimum... closed circuit TV circuit screens in public rooms, apartment suites and deluxe cabins. TV cameras for transmitting films, cruise activities, etc... special acoustic designing of cabin walls and ceilings to achieve noise isolation... new specially designed air-conditioning equipment to absorb any excess of 'party' air conditions...

Yes, the 'Oceanic' is a generation ahead of her time—truly the shape of ships to come, 'the Ship of Tomorrow' here today!

33,500 Tons—Fully Air-Conditioned—All cabins with private bath or shower.



THE "oceanic" POOL

the largest swimming pool afloat

and a LIDO DECK unlike any you've ever seen before...

On the huge Lido Deck is the 'Oceanic' Pool, the biggest afloat—the talk of the seas! The Pool is interestingly shaped to allow a maximum swimming and wading variety, for all ages and water skills. It is constantly replenished with warmed filtered and temperature-controlled sea-water.



Introducing the "MAGRODOME"

World's first sliding transparent
glass roof over a lido deck...

All-Weather Pleasure! Swim
or Laze...Night or Day...in any weather!

In cool or inclement weather, or at night, if need be, the Pool area can be easily covered over instantly by means of its unique and specially designed retractable transparent roof made of non-glare tempered glass—opened or closed as required. The effect is always that of being entirely in the open air...

At night it is illuminated with coloured fountains springing up from the Pool's center—the very first cruise ship to possess this beautiful and exciting novelty. With the adjacent Lido Deck bars, lounges and pool-side areas, the overall deck space exceeds sixty-six thousand square feet.

The 'Oceanic' pool is a 24-hour focal point of tropical cruise fun.

HOMELINES





A WHOLE RIVIERA DECK OF HEAVENLY LOUNGES, EXCITING BARS, FUN-ROOMS

Frolic and Relaxation Areas...

This whole deck is devoted entirely to a series of beautiful social rooms of all kinds... three sparkling social rooms for lounging, dancing, shows, conferences—any one of which would be outstanding on



any ship... the gracious Italian Hall, the enormous Aegean Room inspired by antiquity, with its theatre-sized stage which can be raised or lowered at will... the glittering splendour of the European Observation Lounge... and the smart bars—intriguing, cozy, oddly decorated with cunning modernity or with simulated past glories of décor... restful, quiet card rooms, writing rooms, reading rooms, all beautifully decorated in the spirit of their use...

... your floating palace of cruise pleasure...!

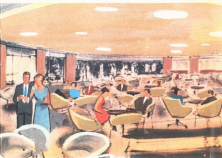
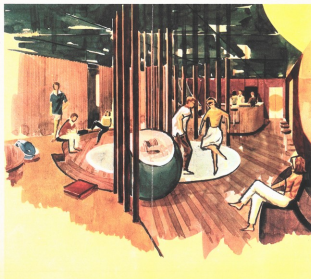




Of special interest to teenagers is the rock-and-rollin' Fun-O-Rama Room on the Lido Deck ... and the ship's fully equipped Sun Deck Gymnasium under the helpful guidance of a trained instructor ... the restful, colorful Caribbean Garden on Belvedere Deck ... the beauty parlor that would do credit to any on Fifth Avenue or Madison ... the barber shop ...

Left hand: left top—"Aegean Room"
left middle—"Europe Observation Lounge"
left lower—"Mayfair Bar"
centre—"Italian Hall" Lounge

Right hand: left top—A Card Room
left lower—"Montmartre Room"
on Lido Deck
right—Teenagers' "Fun-o-rama Room"



NEVER BEFORE SUCH PRIVATE LUXURY ON ANY SHIP..

... on the Sun Deck, eight palatial apartment suites,
each with its own private deck verandah located splendidly aloft in
a sky-top setting like great penthouse residences ...
What dream quarters for V.I.P. cruising!



*Left page — A de luxe Penthouse Suite
on Sun Deck — each penthouse
apartment has its own private verandah.*

*Right page — top left — A typical
super-comfort cabin convertible by
day to a sitting-room.
middle — A cabin de luxe with
adjoining sitting-room.
right — Another view of a
Sun Deck Penthouse Suite.*

... 8 apartments on the SUN DECK and 52 de luxe cabins on the Belvedere Deck... Hundreds of other superlatively comfortable cabins each built so as to provide sitting-room facilities by day... all with telephone service... all with private toilets, showers and/or baths.

These staterooms are superbly decorated in the most modern styles and colours, furnished with the refinements of tomorrow... and all specially air-conditioned to cope with even abnormal air conditions occasioned by parties and receptions, and all sound-proof...

**HOME
LINES**



LIVE LIKE A MAHARAJAH!

The 'Oceanic' Restaurant on Restaurant Deck is probably the largest and most sumptuous dining salon on any ship. This tremendous room, of Spanish/Moorish design, is so constructed that no pillars obstruct the diner's view. The glowing ceiling forms a low cupola and the whole effect is one of grace and space. The kitchens and wine-cellars adjoining are a gleaming kingdom where a special corps of Europe's finest chefs prepare daily miracles of food and drink the gods of old never dreamed of in their most exalted moments!



"Escalier Grill Room" on Lido Deck



The "Oceanic Restaurant"—
one of the largest dining salons afloat
luxuriously seats over 650 people at one sitting!

YOUR CUISINE AT SEA IS SIMPLY IRRESISTIBLE...ANY DISH IN THE WORLD IS YOURS...FOR THE ASKING...

On the Lido Deck, not far from the Pool, is the elegant Escoffier Grill Room, a lordly salon for aristocratic tastes! Here is the ideal spot for late-night supper parties or for after-pool lunches de luxe.

The 'Oceanic' buffets on deck are highlights of the entire cruise. Here are served astonishing delights of the ship's cuisine right on deck where, in whatever sport costume you may choose, you can revel in satisfying a sea-sharpened appetite in the informal company of new-found congenial shipmates... And for breakfast-in-bed and refreshments in your stateroom, a truly regal room service is yours, automatically... just telephone for it.

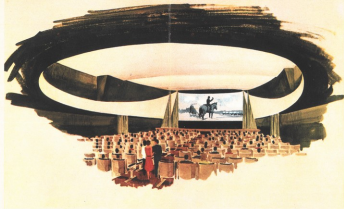
The 'Oceanic' is your super-de luxe hotel in port as you 'do' Nassau at your leisure; or you can stop over and visit the 'out islands' and return home on a later voyage of the 'Oceanic' for another two and one-half days of sea rest and revel.

Come on down to the blessed isles of the Bahamas—and double your fun and holiday pleasure by cruising there and back on your Ship of Paradise—the "Ship of Tomorrow"—your very own 'Oceanic'!

Right top—Breakfast in privacy!

*Right lower—Poolside Buffets
day and night...*





The cinema theatre on Theatre Deck.

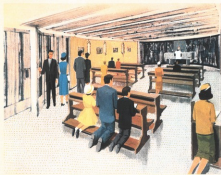
and of course the brilliant Cinema on Theatre Deck for first-run movies. And for the children the adventure-filled Wonderland Playroom on Belvedere Deck, under trained attendants.

And visit the ship's beautiful Chapel on Continental Deck where the resident chaplain performs Mass daily
... and, if you're curious, have a look at the most up-to-date hospital afloat!



Children's "Wonderland Playroom"

The Ship's Chapel.



S/S OCEANIC-S/S HOMERIC-S/S QUEEN FREDERICA-1965 CRUISES

SHIP	LEAVE NEW YORK 4:00 P.M. ★	N A S S A U		ARRIVE NEW YORK A.M.	CRUISE DURATION	MINIMUM RATE U.S.A. \$	HOLIDAY CRUISES	TARIFF
		ARRIVE A.M.	LEAVE P.M.					
QUEEN FREDERICA	Sat. Jan. 2	Tue. Jan. 5	Wed. Jan. 6	Sat. Jan. 9	7 Days	175		A
QUEEN FREDERICA	Sat. Jan. 9	Tue. Jan. 12	Wed. Jan. 13	Sat. Jan. 16	7 Days	175		A
QUEEN FREDERICA	Sat. Jan. 16	Tue. Jan. 19	Wed. Jan. 20	Sat. Jan. 23	7 Days	175		A
QUEEN FREDERICA	Sat. Jan. 23	Tue. Jan. 26	Wed. Jan. 27	Sat. Jan. 30	7 Days	175		A
QUEEN FREDERICA	Sat. Jan. 30	Tue. Feb. 2	Wed. Feb. 3	Sat. Feb. 6	7 Days	175		A
QUEEN FREDERICA	Sat. Feb. 6	Tue. Feb. 9	Wed. Feb. 10	Sat. Feb. 13	7 Days	175	Lincoln's Birthday	A
QUEEN FREDERICA	Sat. Feb. 13	Tue. Feb. 16	Wed. Feb. 17	Sat. Feb. 20	7 Days	175		A
QUEEN FREDERICA	Sat. Feb. 20	Tue. Feb. 23	Wed. Feb. 24	Sat. Feb. 27	7 Days	175	Washington's Birthday	A
QUEEN FREDERICA	Sat. Feb. 27	Tue. March 2	Wed. March 3	Sat. March 6	7 Days	175		A
HOMERIC	Sat. March 6	Tue. March 9	Wed. March 10	Sat. March 13	7 Days	175		B
HOMERIC	Sat. March 13	Tue. March 16	Wed. March 17	Sat. March 20	7 Days	175		B
HOMERIC	Sat. March 20	Tue. March 23	Wed. March 24	Sat. March 27	7 Days	175		B
HOMERIC	Sat. March 27	Tue. March 30	Wed. March 31	Sat. April 3	7 Days	175		B
HOMERIC	Sat. April 3	Tue. April 6	Wed. April 7	Sat. April 10	7 Days	175		B
HOMERIC	Sat. April 10	Tue. April 13	Wed. April 14	Sat. April 17	7 Days	175		B
HOMERIC	Sat. April 17	Tue. April 20	Wed. April 21	Fri. April 23	6 Days	150	Easter	B
OCEANIC	Sat. April 24	Tue. April 27	Wed. April 28	Sat. May 1	7 Days	190		D
OCEANIC	Sat. May 1	Tue. May 4	Wed. May 5	Sat. May 8	7 Days	190		D
OCEANIC	Sat. May 8	Tue. May 11	Wed. May 12	Sat. May 15	7 Days	190		D
OCEANIC	Sat. May 15	Tue. May 18	Wed. May 19	Sat. May 22	7 Days	190		D
OCEANIC	Sat. May 22	Tue. May 25	Wed. May 26	Sat. May 29	7 Days	190		D
OCEANIC	Sat. May 29	Tue. June 1	Wed. June 2	Sat. June 5	7 Days	190	Memorial Day	D
OCEANIC	Sat. June 5	Tue. June 8	Wed. June 9	Sat. June 12	7 Days	190		D
OCEANIC	Sat. June 12	Tue. June 15	Wed. June 16	Sat. June 19	7 Days	190		D
OCEANIC	Sat. June 19	Tue. June 22	Wed. June 23	Sat. June 26	7 Days	190		D
OCEANIC	Sat. June 26	Tue. June 29	Wed. June 30	Sat. July 3	7 Days	190		D
OCEANIC	Sat. July 3	Tue. July 6	Wed. July 7	Sat. July 10	7 Days	190	Independence Day	D
OCEANIC	Sat. July 10	Tue. July 13	Wed. July 14	Sat. July 17	7 Days	190		D
OCEANIC	Sat. July 17	Tue. July 20	Wed. July 21	Sat. July 24	7 Days	190		D
OCEANIC	Sat. July 24	Tue. July 27	Wed. July 28	Sat. July 31	7 Days	190		D
OCEANIC	Sat. July 31	Tue. Aug. 3	Wed. Aug. 4	Sat. Aug. 7	7 Days	190		D
OCEANIC	Sat. Aug. 7	Tue. Aug. 10	Wed. Aug. 11	Sat. Aug. 14	7 Days	190		D
OCEANIC	Sat. Aug. 14	Tue. Aug. 17	Wed. Aug. 18	Sat. Aug. 21	7 Days	190		D
OCEANIC	Sat. Aug. 21	Tue. Aug. 24	Wed. Aug. 25	Sat. Aug. 28	7 Days	190		D
OCEANIC	Sat. Aug. 28	Tue. Aug. 31	Wed. Sept. 1	Sat. Sept. 4	7 Days	190		D
OCEANIC	Sat. Sept. 4	Tue. Sept. 7	Wed. Sept. 8	Sat. Sept. 11	7 Days	190	Labor Day	D
OCEANIC	Sat. Sept. 11	Tue. Sept. 14	Wed. Sept. 15	Sat. Sept. 18	7 Days	175		C
OCEANIC	Sat. Sept. 18	Tue. Sept. 21	Wed. Sept. 22	Sat. Sept. 25	7 Days	175		C
OCEANIC	Sat. Sept. 25	Tue. Sept. 28	Wed. Sept. 29	Sat. Oct. 2	7 Days	175		C
OCEANIC	Sat. Oct. 2	Tue. Oct. 5	Wed. Oct. 6	Sat. Oct. 9	7 Days	175		C
OCEANIC	Sat. Oct. 9	Tue. Oct. 12	Wed. Oct. 13	Sat. Oct. 16	7 Days	175	Columbus Day	C
OCEANIC	Sat. Oct. 16	Tue. Oct. 19	Wed. Oct. 20	Sat. Oct. 23	7 Days	175		C
OCEANIC	Sat. Oct. 23	Tue. Oct. 26	Wed. Oct. 27	Sat. Oct. 30	7 Days	175		C
OCEANIC	Sat. Oct. 30	Tue. Nov. 2	Wed. Nov. 3	Sat. Nov. 6	7 Days	175		C
OCEANIC	Sat. Nov. 6	Tue. Nov. 9	Wed. Nov. 10	Sat. Nov. 13	7 Days	175		C
OCEANIC	Sat. Nov. 13	Tue. Nov. 16	Wed. Nov. 17	Sat. Nov. 20	7 Days	175		C
HOMERIC	Fri. Nov. 19	Mon. Nov. 22	Tue. Nov. 23	Fri. Nov. 26	7 Days	160	Thanksgiving Day	E
OCEANIC	Sat. Nov. 20	Tue. Nov. 23	Wed. Nov. 24	Sat. Nov. 27	7 Days	175	Thanksgiving Day	C
OCEANIC	Sat. Nov. 27	Tue. Nov. 30	Wed. Dec. 1	Sat. Dec. 4	7 Days	175		C
OCEANIC	Sat. Dec. 4	Tue. Dec. 7	Wed. Dec. 8	Sat. Dec. 11	7 Days	175		C
HOMERIC	Sat. Dec. 11	Tue. Dec. 14	Wed. Dec. 15	Sat. Dec. 18	7 Days	160		E
HOMERIC	Sat. Dec. 18	Tue. Dec. 21	Wed. Dec. 22	Fri. Dec. 24	6 Days	140		E
HOMERIC	Fri. Dec. 24	Tue. Dec. 27	Wed. Dec. 28	Thu. Dec. 30	6 Days	155	Christmas	F
HOMERIC	Thu. Dec. 30	Sun. Jan. 2, '66	Tue. Jan. 4, '66	Fri. Jan. 7, '66	6 Days	200	New Year	B

★ Eastern Daylight Time when in effect. ✱ Leave New York 9 P.M. ✧ Leave Nassau 3 A.M.
 Departures: From Pier 84, North River, Foot of West 44th Street, New York City. Embarkation: Two hours before departure.
 Please refer to separate brochure for detailed rates and descriptive information regarding the S.S. QUEEN FREDERICA and the S.S. HOMERIC.

(Subject to change without notice)

SEA-AIR ROUND-TRIP COMBINATION

For combined round-trip sea-air transportation between New York-Nassau, or between Canada-Nassau, involving one-way by S.S. HOMERIC, S.S. OCEANIC, or S.S. QUEEN FREDERICA and one-way by BOAC, Pan American, or Air Canada airlines, passengers ticketed round-trip at the outset, will be allowed one-half of each carrier's round-trip rate.

S.S. HOMERIC S.S. QUEEN FREDERICA— S.S. OCEANIC COMBINATION

Passengers booked round-trip (one-way via S.S. HOMERIC, S.S. QUEEN FREDERICA or S.S. OCEANIC and return via one of these ships) will be charged one-half of the respective seven-day cruise rates of the cabins occupied.

STOPOVER PRIVILEGE: If ticketed at the outset stopovers at Nassau may be arranged with privilege of returning within a period of three months. The rate of each portion will be half the seven-day cruise rate of accommodations assigned.

CHILDREN'S FARES (Age on day of sailing governs): When accompanied by two passengers paying full fare and occupying the same cabins, rates for children are as follows:
12 years and over Full fare
3 years and under 12 years Half Fare
12 months and under 3 years Quarter fare

Under 12 months Free

NASSAU TAX Adults: \$2.00

Children:
Under 12 years \$1.00
Under 3 years No tax
(No tax for passengers booking one-way Southbound to Nassau only.)

S/S OCEANIC 1965 SCHEDULE OF RATES

SUN DECK

APARTMENTS: Consisting of bedroom with two beds, living room with sofa bed, bath and toilet, private terrace.

STANDARD SIZE
KNOXES (S-1), TIVOLI (S-3),
ALANBERN (S-4), IRONSON (S-7)
PORTSIDE
WYNDOR (S-2), CHANDLER (S-4),
HEDDERBERG (S-6), VINDY (S-8)

BELVEDERE DECK

CABINS BELUE: Outside, consisting of bedroom sitting room, bath and toilet.

With two beds and one sofa: B-25, B-21, B-22, B-23, B-24, B-27, B-28, B-29, B-30, B-31, B-32, B-33, B-34, B-35, B-36, B-37, B-38, B-39, B-40, B-41, B-42, B-43, B-44, B-45, B-46, B-47, B-48, B-49, B-50, B-51, B-52, B-53, B-54, B-55, B-56, B-57, B-58, B-59, B-60, B-61, B-62, B-63, B-64, B-65, B-66, B-67, B-68, B-69, B-70, B-71, B-72, B-73, B-74, B-75, B-76, B-77, B-78, B-79, B-80, B-81, B-82, B-83, B-84, B-85, B-86, B-87, B-88, B-89, B-90, B-91, B-92, B-93, B-94, B-95, B-96, B-97, B-98, B-99, B-100, B-101, B-102, B-103, B-104, B-105, B-106, B-107, B-108, B-109, B-110, B-111, B-112, B-113, B-114, B-115, B-116, B-117, B-118, B-119, B-120, B-121, B-122, B-123, B-124, B-125, B-126, B-127, B-128, B-129, B-130, B-131, B-132, B-133, B-134, B-135, B-136, B-137, B-138, B-139, B-140, B-141, B-142, B-143, B-144, B-145, B-146, B-147, B-148, B-149, B-150, B-151, B-152, B-153, B-154, B-155, B-156, B-157, B-158, B-159, B-160, B-161, B-162, B-163, B-164, B-165, B-166, B-167, B-168, B-169, B-170, B-171, B-172, B-173, B-174, B-175, B-176, B-177, B-178, B-179, B-180, B-181, B-182, B-183, B-184, B-185, B-186, B-187, B-188, B-189, B-190, B-191, B-192, B-193, B-194, B-195, B-196, B-197, B-198, B-199, B-200, B-201, B-202, B-203, B-204, B-205, B-206, B-207, B-208, B-209, B-210, B-211, B-212, B-213, B-214, B-215, B-216, B-217, B-218, B-219, B-220, B-221, B-222, B-223, B-224, B-225, B-226, B-227, B-228, B-229, B-230, B-231, B-232, B-233, B-234, B-235, B-236, B-237, B-238, B-239, B-240, B-241, B-242, B-243, B-244, B-245, B-246, B-247, B-248, B-249, B-250, B-251, B-252, B-253, B-254, B-255, B-256, B-257, B-258, B-259, B-260, B-261, B-262, B-263, B-264, B-265, B-266, B-267, B-268, B-269, B-270, B-271, B-272, B-273, B-274, B-275, B-276, B-277, B-278, B-279, B-280, B-281, B-282, B-283, B-284, B-285, B-286, B-287, B-288, B-289, B-290, B-291, B-292, B-293, B-294, B-295, B-296, B-297, B-298, B-299, B-300, B-301, B-302, B-303, B-304, B-305, B-306, B-307, B-308, B-309, B-310, B-311, B-312, B-313, B-314, B-315, B-316, B-317, B-318, B-319, B-320, B-321, B-322, B-323, B-324, B-325, B-326, B-327, B-328, B-329, B-330, B-331, B-332, B-333, B-334, B-335, B-336, B-337, B-338, B-339, B-340, B-341, B-342, B-343, B-344, B-345, B-346, B-347, B-348, B-349, B-350, B-351, B-352, B-353, B-354, B-355, B-356, B-357, B-358, B-359, B-360, B-361, B-362, B-363, B-364, B-365, B-366, B-367, B-368, B-369, B-370, B-371, B-372, B-373, B-374, B-375, B-376, B-377, B-378, B-379, B-380, B-381, B-382, B-383, B-384, B-385, B-386, B-387, B-388, B-389, B-390, B-391, B-392, B-393, B-394, B-395, B-396, B-397, B-398, B-399, B-400, B-401, B-402, B-403, B-404, B-405, B-406, B-407, B-408, B-409, B-410, B-411, B-412, B-413, B-414, B-415, B-416, B-417, B-418, B-419, B-420, B-421, B-422, B-423, B-424, B-425, B-426, B-427, B-428, B-429, B-430, B-431, B-432, B-433, B-434, B-435, B-436, B-437, B-438, B-439, B-440, B-441, B-442, B-443, B-444, B-445, B-446, B-447, B-448, B-449, B-450, B-451, B-452, B-453, B-454, B-455, B-456, B-457, B-458, B-459, B-460, B-461, B-462, B-463, B-464, B-465, B-466, B-467, B-468, B-469, B-470, B-471, B-472, B-473, B-474, B-475, B-476, B-477, B-478, B-479, B-480, B-481, B-482, B-483, B-484, B-485, B-486, B-487, B-488, B-489, B-490, B-491, B-492, B-493, B-494, B-495, B-496, B-497, B-498, B-499, B-500, B-501, B-502, B-503, B-504, B-505, B-506, B-507, B-508, B-509, B-510, B-511, B-512, B-513, B-514, B-515, B-516, B-517, B-518, B-519, B-520, B-521, B-522, B-523, B-524, B-525, B-526, B-527, B-528, B-529, B-530, B-531, B-532, B-533, B-534, B-535, B-536, B-537, B-538, B-539, B-540, B-541, B-542, B-543, B-544, B-545, B-546, B-547, B-548, B-549, B-550, B-551, B-552, B-553, B-554, B-555, B-556, B-557, B-558, B-559, B-560, B-561, B-562, B-563, B-564, B-565, B-566, B-567, B-568, B-569, B-570, B-571, B-572, B-573, B-574, B-575, B-576, B-577, B-578, B-579, B-580, B-581, B-582, B-583, B-584, B-585, B-586, B-587, B-588, B-589, B-590, B-591, B-592, B-593, B-594, B-595, B-596, B-597, B-598, B-599, B-600, B-601, B-602, B-603, B-604, B-605, B-606, B-607, B-608, B-609, B-610, B-611, B-612, B-613, B-614, B-615, B-616, B-617, B-618, B-619, B-620, B-621, B-622, B-623, B-624, B-625, B-626, B-627, B-628, B-629, B-630, B-631, B-632, B-633, B-634, B-635, B-636, B-637, B-638, B-639, B-640, B-641, B-642, B-643, B-644, B-645, B-646, B-647, B-648, B-649, B-650, B-651, B-652, B-653, B-654, B-655, B-656, B-657, B-658, B-659, B-660, B-661, B-662, B-663, B-664, B-665, B-666, B-667, B-668, B-669, B-670, B-671, B-672, B-673, B-674, B-675, B-676, B-677, B-678, B-679, B-680, B-681, B-682, B-683, B-684, B-685, B-686, B-687, B-688, B-689, B-690, B-691, B-692, B-693, B-694, B-695, B-696, B-697, B-698, B-699, B-700, B-701, B-702, B-703, B-704, B-705, B-706, B-707, B-708, B-709, B-710, B-711, B-712, B-713, B-714, B-715, B-716, B-717, B-718, B-719, B-720, B-721, B-722, B-723, B-724, B-725, B-726, B-727, B-728, B-729, B-730, B-731, B-732, B-733, B-734, B-735, B-736, B-737, B-738, B-739, B-740, B-741, B-742, B-743, B-744, B-745, B-746, B-747, B-748, B-749, B-750, B-751, B-752, B-753, B-754, B-755, B-756, B-757, B-758, B-759, B-760, B-761, B-762, B-763, B-764, B-765, B-766, B-767, B-768, B-769, B-770, B-771, B-772, B-773, B-774, B-775, B-776, B-777, B-778, B-779, B-780, B-781, B-782, B-783, B-784, B-785, B-786, B-787, B-788, B-789, B-790, B-791, B-792, B-793, B-794, B-795, B-796, B-797, B-798, B-799, B-800, B-801, B-802, B-803, B-804, B-805, B-806, B-807, B-808, B-809, B-810, B-811, B-812, B-813, B-814, B-815, B-816, B-817, B-818, B-819, B-820, B-821, B-822, B-823, B-824, B-825, B-826, B-827, B-828, B-829, B-830, B-831, B-832, B-833, B-834, B-835, B-836, B-837, B-838, B-839, B-840, B-841, B-842, B-843, B-844, B-845, B-846, B-847, B-848, B-849, B-850, B-851, B-852, B-853, B-854, B-855, B-856, B-857, B-858, B-859, B-860, B-861, B-862, B-863, B-864, B-865, B-866, B-867, B-868, B-869, B-870, B-871, B-872, B-873, B-874, B-875, B-876, B-877, B-878, B-879, B-880, B-881, B-882, B-883, B-884, B-885, B-886, B-887, B-888, B-889, B-890, B-891, B-892, B-893, B-894, B-895, B-896, B-897, B-898, B-899, B-900, B-901, B-902, B-903, B-904, B-905, B-906, B-907, B-908, B-909, B-910, B-911, B-912, B-913, B-914, B-915, B-916, B-917, B-918, B-919, B-920, B-921, B-922, B-923, B-924, B-925, B-926, B-927, B-928, B-929, B-930, B-931, B-932, B-933, B-934, B-935, B-936, B-937, B-938, B-939, B-940, B-941, B-942, B-943, B-944, B-945, B-946, B-947, B-948, B-949, B-950, B-951, B-952, B-953, B-954, B-955, B-956, B-957, B-958, B-959, B-960, B-961, B-962, B-963, B-964, B-965, B-966, B-967, B-968, B-969, B-970, B-971, B-972, B-973, B-974, B-975, B-976, B-977, B-978, B-979, B-980, B-981, B-982, B-983, B-984, B-985, B-986, B-987, B-988, B-989, B-990, B-991, B-992, B-993, B-994, B-995, B-996, B-997, B-998, B-999, B-1000, B-1001, B-1002, B-1003, B-1004, B-1005, B-1006, B-1007, B-1008, B-1009, B-1010, B-1011, B-1012, B-1013, B-1014, B-1015, B-1016, B-1017, B-1018, B-1019, B-1020, B-1021, B-1022, B-1023, B-1024, B-1025, B-1026, B-1027, B-1028, B-1029, B-1030, B-1031, B-1032, B-1033, B-1034, B-1035, B-1036, B-1037, B-1038, B-1039, B-1040, B-1041, B-1042, B-1043, B-1044, B-1045, B-1046, B-1047, B-1048, B-1049, B-1050, B-1051, B-1052, B-1053, B-1054, B-1055, B-1056, B-1057, B-1058, B-1059, B-1060, B-1061, B-1062, B-1063, B-1064, B-1065, B-1066, B-1067, B-1068, B-1069, B-1070, B-1071, B-1072, B-1073, B-1074, B-1075, B-1076, B-1077, B-1078, B-1079, B-1080, B-1081, B-1082, B-1083, B-1084, B-1085, B-1086, B-1087, B-1088, B-1089, B-1090, B-1091, B-1092, B-1093, B-1094, B-1095, B-1096, B-1097, B-1098, B-1099, B-1100, B-1101, B-1102, B-1103, B-1104, B-1105, B-1106, B-1107, B-1108, B-1109, B-1110, B-1111, B-1112, B-1113, B-1114, B-1115, B-1116, B-1117, B-1118, B-1119, B-1120, B-1121, B-1122, B-1123, B-1124, B-1125, B-1126, B-1127, B-1128, B-1129, B-1130, B-1131, B-1132, B-1133, B-1134, B-1135, B-1136, B-1137, B-1138, B-1139, B-1140, B-1141, B-1142, B-1143, B-1144, B-1145, B-1146, B-1147, B-1148, B-1149, B-1150, B-1151, B-1152, B-1153, B-1154, B-1155, B-1156, B-1157, B-1158, B-1159, B-1160, B-1161, B-1162, B-1163, B-1164, B-1165, B-1166, B-1167, B-1168, B-1169, B-1170, B-1171, B-1172, B-1173, B-1174, B-1175, B-1176, B-1177, B-1178, B-1179, B-1180, B-1181, B-1182, B-1183, B-1184, B-1185, B-1186, B-1187, B-1188, B-1189, B-1190, B-1191, B-1192, B-1193, B-1194, B-1195, B-1196, B-1197, B-1198, B-1199, B-1200, B-1201, B-1202, B-1203, B-1204, B-1205, B-1206, B-1207, B-1208, B-1209, B-1210, B-1211, B-1212, B-1213, B-1214, B-1215, B-1216, B-1217, B-1218, B-1219, B-1220, B-1221, B-1222, B-1223, B-1224, B-1225, B-1226, B-1227, B-1228, B-1229, B-1230, B-1231, B-1232, B-1233, B-1234, B-1235, B-1236, B-1237, B-1238, B-1239, B-1240, B-1241, B-1242, B-1243, B-1244, B-1245, B-1246, B-1247, B-1248, B-1249, B-1250, B-1251, B-1252, B-1253, B-1254, B-1255, B-1256, B-1257, B-1258, B-1259, B-1260, B-1261, B-1262, B-1263, B-1264, B-1265, B-1266, B-1267, B-1268, B-1269, B-1270, B-1271, B-1272, B-1273, B-1274, B-1275, B-1276, B-1277, B-1278, B-1279, B-1280, B-1281, B-1282, B-1283, B-1284, B-1285, B-1286, B-1287, B-1288, B-1289, B-1290, B-1291, B-1292, B-1293, B-1294, B-1295, B-1296, B-1297, B-1298, B-1299, B-1300, B-1301, B-1302, B-1303, B-1304, B-1305, B-1306, B-1307, B-1308, B-1309, B-1310, B-1311, B-1312, B-1313, B-1314, B-1315, B-1316, B-1317, B-1318, B-1319, B-1320, B-1321, B-1322, B-1323, B-1324, B-1325, B-1326, B-1327, B-1328, B-1329, B-1330, B-1331, B-1332, B-1333, B-1334, B-1335, B-1336, B-1337, B-1338, B-1339, B-1340, B-1341, B-1342, B-1343, B-1344, B-1345, B-1346, B-1347, B-1348, B-1349, B-1350, B-1351, B-1352, B-1353, B-1354, B-1355, B-1356, B-1357, B-1358, B-1359, B-1360, B-1361, B-1362, B-1363, B-1364, B-1365, B-1366, B-1367, B-1368, B-1369, B-1370, B-1371, B-1372, B-1373, B-1374, B-1375, B-1376, B-1377, B-1378, B-1379, B-1380, B-1381, B-1382, B-1383, B-1384, B-1385, B-1386, B-1387, B-1388, B-1389, B-1390, B-1391, B-1392, B-1393, B-1394, B-1395, B-1396, B-1397, B-1398, B-1399, B-1400, B-1401, B-1402, B-1403, B-1404, B-1405, B-1406, B-1407, B-1408, B-1409, B-1410, B-1411, B-1412, B-1413, B-1414, B-1415, B-1416, B-1417, B-1418, B-1419, B-1420, B-1421, B-1422, B-1423, B-1424, B-1425, B-1426, B-1427, B-1428, B-1429, B-1430, B-1431, B-1432, B-1433, B-1434, B-1435, B-1436, B-1437, B-1438, B-1439, B-1440, B-1441, B-1442, B-1443, B-1444, B-1445, B-1446, B-1447, B-1448, B-1449, B-1450, B-1451, B-1452, B-1453, B-1454, B-1455, B-1456, B-1457, B-1458, B-1459, B-1460, B-1461, B-1462, B-1463, B-1464, B-1465, B-1466, B-1467, B-1468, B-1469, B-1470, B-1471, B-1472, B-1473, B-1474, B-1475, B-1476, B-1477, B-1478, B-1479, B-1480, B-1481, B-1482, B-1483, B-1484, B-1485, B-1486, B-1487, B-1488, B-1489, B-1490, B-1491, B-1492, B-1493, B-1494, B-1495, B-1496, B-1497, B-1498, B-1499, B-1500, B-1501, B-1502, B-1503, B-1504, B-1505, B-1506, B-1507, B-1508, B-1509, B-1510, B-1511, B-1512, B-1513, B-1514, B-1515, B-1516, B-1517, B-1518, B-1519, B-1520, B-1521, B-1522, B-1523, B-1524, B-1525, B-1526, B-1527, B-1528, B-1529, B-1530, B-1531, B-1532, B-1533, B-1534, B-1535, B-1536, B-1537, B-1538, B-1539, B-1540, B-1541, B-1542, B-1543, B-1544, B-1545, B-1546, B-1547, B-1548, B-1549, B-1550, B-1551, B-1552, B-1553, B-1554, B-1555, B-1556, B-1557, B-1558, B-1559, B-1560, B-1561, B-1562, B-1563, B-1564, B-1565, B-1566, B-1567, B-1568, B-1569, B-1570, B-1571, B-1572, B-1573, B-1574, B-1575, B-1576, B-1577, B-1578, B-1579, B-1580, B-1581, B-1582, B-1583, B-1584, B-1585, B-1586, B-1587, B-1588, B-1589, B-1590, B-1591, B-1592, B-1593, B-1594, B-1595, B-1596, B-1597, B-1598, B-1599, B-1600, B-1601, B-1602, B-1603, B-1604, B-1605, B-1606, B-1607, B-1608, B-1609, B-1610, B-1611, B-1612, B-1613, B-1614, B-1615, B-1616, B-1617, B-1618, B-1619, B-1620, B-1621, B-1622, B-1623, B-1624, B-1625, B-1626, B-1627, B-1628, B-1629, B-1630, B-1631, B-1632, B-1633, B-1634, B-1635, B-1636, B-1637, B-1638, B-1639, B-1640, B-1641, B-1642, B-1643, B-1644, B-1645, B-1646, B-1647, B-1648, B-1649, B-1650, B-1651, B-1652, B-1653, B-1654, B-1655, B-1656, B-1657, B-1658, B-1659, B-1660, B-1661, B-1662, B-1663, B-1664, B-1665, B-1666, B-1667, B-1668, B-1669, B-1670, B-1671, B-1672, B-1673, B-1674, B-1675, B-1676, B-1677, B-1678, B-1679, B-1680, B-1681, B-1682, B-1683, B-1684, B-1685, B-1686, B-1687, B-1688, B-1689, B-1690, B-1691, B-1692, B-1693, B-1694, B-1695, B-1696, B-1697, B-1698, B-1699, B-1700, B-1701, B-1702, B-1703, B-1704, B-1705, B-1706, B-1707, B-1708, B-1709, B-1710, B-1711, B-1712, B-1713, B-1714, B-1715, B-1716, B-1717, B-1718, B-1719, B-1720, B-1721, B-1722, B-1723, B-1724, B-1725, B-1726, B-1727, B-1728, B-1729, B-1730, B-1731, B-1732, B-1733, B-1734, B-1735, B-1736, B-1737, B-1738, B-1739, B-1740, B-1741, B-1742, B-1743, B-1744, B-1745, B-1746, B-1747, B-1748, B-1749, B-1750, B-1751, B-1752, B-1753, B-1754, B-1755, B-1756, B-1757, B-1758, B-1759, B-1760, B-1761, B-1762, B-1763, B-1764, B-1765, B-1766, B-1767, B-1768, B-1769, B-1770, B-1771, B-1772, B-1773, B-1774, B-1775, B-1776, B-

S/S OCEANIC

1965 SCHEDULE OF RATES

(continued)

RESTAURANT DECK (continued)

OUTSIDE ROOMS WITH SHOWER AND TOILET:
With two beds and one pullman upper: \$58*, \$60* —
With two beds: \$47, \$48, \$48, \$49

INSIDE ROOMS WITH SHOWER AND TOILET:

With two beds and one pullman upper: \$-8, \$10, \$-3, \$-17, \$-22, \$-28, \$-28, \$-34, \$-35, \$-40, \$-42 —
\$-50, \$-52, \$-61, \$-62, \$-65, \$-66 —
With two beds: \$-63, \$-64, \$-73, \$-74 —
\$-1, \$-2, \$-3, \$-4, \$-11, \$-12, \$-18, \$-19, \$-24, \$-25, \$-28, \$-27, \$-36, \$-37, \$-38, \$-39 —
\$-48, \$-49, \$-51, \$-53, \$-54, \$-71, \$-72

ATLANTIC DECK

OUTSIDE ROOMS WITH BATH AND TOILET:
With two beds and one pullman upper: \$-38*, \$-39*, \$-37*, \$-35*, \$-36*, \$-38*, \$-41*, \$-42*, \$-48*, \$-49*, \$-55*, \$-57*, \$-62*, \$-64*, \$-68*, \$-71*, \$-82*, \$-83*, \$-84*, \$-88*, \$-90*, \$-92*, \$-93* —
\$-1, \$-2, \$-3, \$-4, \$-7

INSIDE ROOMS WITH BATH AND TOILET:
With two beds and one pullman upper: \$-48*, \$-51*, \$-62*, \$-65, \$-66, \$-69 —
\$-2, \$-3, \$-10*, \$-13*

OUTSIDE ROOMS WITH SHOWER AND TOILET:

With two beds and one pullman upper: \$-74*, \$-76*, \$-81*, \$-82*, \$-88, \$-89* —
\$-88, \$-23, \$-104, \$-108, \$-110, \$-116, \$-123, \$-124, \$-128, \$-131, \$-133, \$-134, \$-140 —
With two beds: \$-100, \$-107

INSIDE ROOMS WITH SHOWER AND TOILET:
With two beds and one pullman upper: \$-56, \$-57, \$-34, \$-35, \$-40, \$-48, \$-52, \$-53, \$-58, \$-60, \$-66, \$-67, \$-77, \$-79, \$-80, \$-85, \$-87, \$-88, \$-94, \$-95, \$-102, \$-103, \$-105, \$-106, \$-113 —
With two beds: \$-86, \$-103

\$-24, \$-25, \$-32, \$-37, \$-42, \$-44, \$-47, \$-51, \$-56, \$-58, \$-62, \$-68, \$-69, \$-76, \$-79, \$-87, \$-102, \$-109 —
\$-3, \$-8, \$-10, \$-11, \$-12, \$-14, \$-17, \$-19, \$-20, \$-22, \$-25, \$-27, \$-118, \$-122, \$-124, \$-128, \$-131, \$-132, \$-133, \$-138, \$-139, \$-142, \$-143, \$-148, \$-149

OCEANIC DECK

OUTSIDE ROOMS WITH BATH AND TOILET:
With two beds and one pullman upper: \$-38*, \$-41*, \$-48*, \$-58*, \$-51*, \$-53*, \$-62*, \$-64*, \$-68*, \$-67*, \$-74*, \$-81*, \$-82*

INSIDE ROOMS WITH BATH AND TOILET:
With two beds and one pullman upper: \$-58*, \$-59*

OUTSIDE ROOMS WITH SHOWER AND TOILET:
With two beds and one pullman upper: \$-127, \$-130, \$-114, \$-115, \$-116, \$-121, \$-123 —
With two beds: \$-38, \$-39, \$-40, \$-105, \$-106 —
With one bed and one pullman upper: \$-8, \$-9, \$-10, \$-13, \$-18, \$-20, \$-21, \$-22, \$-23, \$-24, \$-25, \$-27

INSIDE ROOMS WITH SHOWER AND TOILET:
With two beds and one pullman upper: \$-30, \$-33, \$-48, \$-53, \$-58, \$-69, \$-70, \$-80, \$-81, \$-86, \$-87, \$-88, \$-90, \$-96, \$-97, \$-107, \$-111, \$-112, \$-113, \$-114, \$-115, \$-116, \$-117, \$-118, \$-119, \$-120, \$-121, \$-122, \$-123, \$-124, \$-125, \$-126, \$-127, \$-128, \$-129, \$-130, \$-131, \$-132, \$-133, \$-134, \$-135, \$-136, \$-137, \$-138, \$-139, \$-140, \$-141, \$-142, \$-143, \$-144, \$-145, \$-146, \$-147, \$-148, \$-149, \$-150, \$-151, \$-152, \$-153, \$-154, \$-155, \$-156, \$-157, \$-158, \$-159, \$-160, \$-161, \$-162, \$-163, \$-164, \$-165, \$-166, \$-167, \$-168, \$-169, \$-170, \$-171, \$-172, \$-173, \$-174, \$-175, \$-176, \$-177, \$-178, \$-179, \$-180, \$-181, \$-182, \$-183, \$-184, \$-185, \$-186, \$-187, \$-188, \$-189, \$-190, \$-191, \$-192, \$-193, \$-194, \$-195, \$-196, \$-197, \$-198, \$-199, \$-200, \$-201, \$-202, \$-203, \$-204, \$-205, \$-206, \$-207, \$-208, \$-209, \$-210, \$-211, \$-212, \$-213, \$-214, \$-215, \$-216, \$-217, \$-218, \$-219, \$-220, \$-221, \$-222, \$-223, \$-224, \$-225, \$-226, \$-227, \$-228, \$-229, \$-230, \$-231, \$-232, \$-233, \$-234, \$-235, \$-236, \$-237, \$-238, \$-239, \$-240, \$-241, \$-242, \$-243, \$-244, \$-245, \$-246, \$-247, \$-248, \$-249, \$-250, \$-251, \$-252, \$-253, \$-254, \$-255, \$-256, \$-257, \$-258, \$-259, \$-260, \$-261, \$-262, \$-263, \$-264, \$-265, \$-266, \$-267, \$-268, \$-269, \$-270, \$-271, \$-272, \$-273, \$-274, \$-275, \$-276, \$-277, \$-278, \$-279, \$-280, \$-281, \$-282, \$-283, \$-284, \$-285, \$-286, \$-287, \$-288, \$-289, \$-290, \$-291, \$-292, \$-293, \$-294, \$-295, \$-296, \$-297, \$-298, \$-299, \$-300, \$-301, \$-302, \$-303, \$-304, \$-305, \$-306, \$-307, \$-308, \$-309, \$-310, \$-311, \$-312, \$-313, \$-314, \$-315, \$-316, \$-317, \$-318, \$-319, \$-320, \$-321, \$-322, \$-323, \$-324, \$-325, \$-326, \$-327, \$-328, \$-329, \$-330, \$-331, \$-332, \$-333, \$-334, \$-335, \$-336, \$-337, \$-338, \$-339, \$-340, \$-341, \$-342, \$-343, \$-344, \$-345, \$-346, \$-347, \$-348, \$-349, \$-350, \$-351, \$-352, \$-353, \$-354, \$-355, \$-356, \$-357, \$-358, \$-359, \$-360, \$-361, \$-362, \$-363, \$-364, \$-365, \$-366, \$-367, \$-368, \$-369, \$-370, \$-371, \$-372, \$-373, \$-374, \$-375, \$-376, \$-377, \$-378, \$-379, \$-380, \$-381, \$-382, \$-383, \$-384, \$-385, \$-386, \$-387, \$-388, \$-389, \$-390, \$-391, \$-392, \$-393, \$-394, \$-395, \$-396, \$-397, \$-398, \$-399, \$-400, \$-401, \$-402, \$-403, \$-404, \$-405, \$-406, \$-407, \$-408, \$-409, \$-410, \$-411, \$-412, \$-413, \$-414, \$-415, \$-416, \$-417, \$-418, \$-419, \$-420, \$-421, \$-422, \$-423, \$-424, \$-425, \$-426, \$-427, \$-428, \$-429, \$-430, \$-431, \$-432, \$-433, \$-434, \$-435, \$-436, \$-437, \$-438, \$-439, \$-440, \$-441, \$-442, \$-443, \$-444, \$-445, \$-446, \$-447, \$-448, \$-449, \$-450, \$-451, \$-452, \$-453, \$-454, \$-455, \$-456, \$-457, \$-458, \$-459, \$-460, \$-461, \$-462, \$-463, \$-464, \$-465, \$-466, \$-467, \$-468, \$-469, \$-470, \$-471, \$-472, \$-473, \$-474, \$-475, \$-476, \$-477, \$-478, \$-479, \$-480, \$-481, \$-482, \$-483, \$-484, \$-485, \$-486, \$-487, \$-488, \$-489, \$-490, \$-491, \$-492, \$-493, \$-494, \$-495, \$-496, \$-497, \$-498, \$-499, \$-500, \$-501, \$-502, \$-503, \$-504, \$-505, \$-506, \$-507, \$-508, \$-509, \$-510, \$-511, \$-512, \$-513, \$-514, \$-515, \$-516, \$-517, \$-518, \$-519, \$-520, \$-521, \$-522, \$-523, \$-524, \$-525, \$-526, \$-527, \$-528, \$-529, \$-530, \$-531, \$-532, \$-533, \$-534, \$-535, \$-536, \$-537, \$-538, \$-539, \$-540, \$-541, \$-542, \$-543, \$-544, \$-545, \$-546, \$-547, \$-548, \$-549, \$-550, \$-551, \$-552, \$-553, \$-554, \$-555, \$-556, \$-557, \$-558, \$-559, \$-560, \$-561, \$-562, \$-563, \$-564, \$-565, \$-566, \$-567, \$-568, \$-569, \$-570, \$-571, \$-572, \$-573, \$-574, \$-575, \$-576, \$-577, \$-578, \$-579, \$-580, \$-581, \$-582, \$-583, \$-584, \$-585, \$-586, \$-587, \$-588, \$-589, \$-590, \$-591, \$-592, \$-593, \$-594, \$-595, \$-596, \$-597, \$-598, \$-599, \$-600, \$-601, \$-602, \$-603, \$-604, \$-605, \$-606, \$-607, \$-608, \$-609, \$-610, \$-611, \$-612, \$-613, \$-614, \$-615, \$-616, \$-617, \$-618, \$-619, \$-620, \$-621, \$-622, \$-623, \$-624, \$-625, \$-626, \$-627, \$-628, \$-629, \$-630, \$-631, \$-632, \$-633, \$-634, \$-635, \$-636, \$-637, \$-638, \$-639, \$-640, \$-641, \$-642, \$-643, \$-644, \$-645, \$-646, \$-647, \$-648, \$-649, \$-650, \$-651, \$-652, \$-653, \$-654, \$-655, \$-656, \$-657, \$-658, \$-659, \$-660, \$-661, \$-662, \$-663, \$-664, \$-665, \$-666, \$-667, \$-668, \$-669, \$-670, \$-671, \$-672, \$-673, \$-674, \$-675, \$-676, \$-677, \$-678, \$-679, \$-680, \$-681, \$-682, \$-683, \$-684, \$-685, \$-686, \$-687, \$-688, \$-689, \$-690, \$-691, \$-692, \$-693, \$-694, \$-695, \$-696, \$-697, \$-698, \$-699, \$-700, \$-701, \$-702, \$-703, \$-704, \$-705, \$-706, \$-707, \$-708, \$-709, \$-710, \$-711, \$-712, \$-713, \$-714, \$-715, \$-716, \$-717, \$-718, \$-719, \$-720, \$-721, \$-722, \$-723, \$-724, \$-725, \$-726, \$-727, \$-728, \$-729, \$-730, \$-731, \$-732, \$-733, \$-734, \$-735, \$-736, \$-737, \$-738, \$-739, \$-740, \$-741, \$-742, \$-743, \$-744, \$-745, \$-746, \$-747, \$-748, \$-749, \$-750, \$-751, \$-752, \$-753, \$-754, \$-755, \$-756, \$-757, \$-758, \$-759, \$-760, \$-761, \$-762, \$-763, \$-764, \$-765, \$-766, \$-767, \$-768, \$-769, \$-770, \$-771, \$-772, \$-773, \$-774, \$-775, \$-776, \$-777, \$-778, \$-779, \$-780, \$-781, \$-782, \$-783, \$-784, \$-785, \$-786, \$-787, \$-788, \$-789, \$-790, \$-791, \$-792, \$-793, \$-794, \$-795, \$-796, \$-797, \$-798, \$-799, \$-800, \$-801, \$-802, \$-803, \$-804, \$-805, \$-806, \$-807, \$-808, \$-809, \$-810, \$-811, \$-812, \$-813, \$-814, \$-815, \$-816, \$-817, \$-818, \$-819, \$-820, \$-821, \$-822, \$-823, \$-824, \$-825, \$-826, \$-827, \$-828, \$-829, \$-830, \$-831, \$-832, \$-833, \$-834, \$-835, \$-836, \$-837, \$-838, \$-839, \$-840, \$-841, \$-842, \$-843, \$-844, \$-845, \$-846, \$-847, \$-848, \$-849, \$-850, \$-851, \$-852, \$-853, \$-854, \$-855, \$-856, \$-857, \$-858, \$-859, \$-860, \$-861, \$-862, \$-863, \$-864, \$-865, \$-866, \$-867, \$-868, \$-869, \$-870, \$-871, \$-872, \$-873, \$-874, \$-875, \$-876, \$-877, \$-878, \$-879, \$-880, \$-881, \$-882, \$-883, \$-884, \$-885, \$-886, \$-887, \$-888, \$-889, \$-890, \$-891, \$-892, \$-893, \$-894, \$-895, \$-896, \$-897, \$-898, \$-899, \$-900, \$-901, \$-902, \$-903, \$-904, \$-905, \$-906, \$-907, \$-908, \$-909, \$-910, \$-911, \$-912, \$-913, \$-914, \$-915, \$-916, \$-917, \$-918, \$-919, \$-920, \$-921, \$-922, \$-923, \$-924, \$-925, \$-926, \$-927, \$-928, \$-929, \$-930, \$-931, \$-932, \$-933, \$-934, \$-935, \$-936, \$-937, \$-938, \$-939, \$-940, \$-941, \$-942, \$-943, \$-944, \$-945, \$-946, \$-947, \$-948, \$-949, \$-950, \$-951, \$-952, \$-953, \$-954, \$-955, \$-956, \$-957, \$-958, \$-959, \$-960, \$-961, \$-962, \$-963, \$-964, \$-965, \$-966, \$-967, \$-968, \$-969, \$-970, \$-971, \$-972, \$-973, \$-974, \$-975, \$-976, \$-977, \$-978, \$-979, \$-980, \$-981, \$-982, \$-983, \$-984, \$-985, \$-986, \$-987, \$-988, \$-989, \$-990, \$-991, \$-992, \$-993, \$-994, \$-995, \$-996, \$-997, \$-998, \$-999, \$-1000

MINIMUM RATE
*Cabins so designated are fitted with a second pullman upper and can accommodate a fourth member of a group at the minimum rate only at the option of the Company.

FACTS AND FIGURES

BUILDERS: Cantieri Riuniti dell'Adriatico, Trieste—one of Europe's greatest shipyards.
REGISTERED GROSS TONNAGE: About 33,500 tons.

TWIN-SCREW: 60,000 horsepower.

TOP SPEED: About 26.5 knots.

LENGTH OVERALL: 774 feet.

BEAM: 97 feet.

FULLY AIR-CONDITIONED THROUGHOUT.
EQUIPPED WITH DENNY BROWN STABILIZERS to minimize rolling, and flames fore and aft to reduce pitching.

CLOSED CIRCUIT TV-screens in public rooms, apartments, and deluxe cabins. TV cameras for transmitting films, cruise activities, etc.

SWIMMING POOL, 'LIDO' AREA: 10,350 sq. feet, with two adjoining pools each of 360 sq. feet.

TOTAL DECK SPACES: 66,350 sq. feet.

CINEMA SLATING CAPACITY: (two levels) 420.

22 public rooms totaling 54,000 sq. feet, of which one lounge is of 7,930 sq. feet, for shows, and conferences, provided with screen for cinema projection.

Specially designed accommodation for cruises all year-round, with unique features including a main dining room accommodating over 650 passengers in comfort at one sitting.

ONE CHILDREN'S AND ONE TEENAGER'S ROOMS, totaling 2,150 sq. feet.

SHIP-SHORE SERVICE: De luxe fast motor boats for quick and comfortable ship-shore service in port.

SUPPORTER for fast safe ship-shore transfer of automobiles, when required.

NAVIGATIONAL EQUIPMENT of the most MODERN TYPE: two radars of different range equipped with automatic anti-collision plotter, a Sperry gyrocompass and 8 repeaters, a Sperry course recorder, an echo sounder, a Decca navigator, a Sperry Loran navigator, a Sperry automatic pilot.

TOTAL PASSENGER CAPACITY: 1,601.

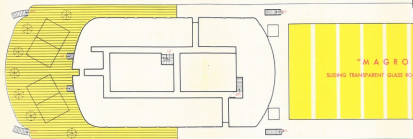
CRUISE CAPACITY: 1,200—all lower berths, all cabins with private facilities and telephone.

174 IN LUXURY ACCOMMODATION: 6 "Penthouse" (Sun Deck) Verandah Apartments, each of 450 sq. feet, with private deck space of 220 sq. feet each.

52 DE LUXE CABINS, each with sitting room, of 250 sq. feet each, on Belvedere Deck.

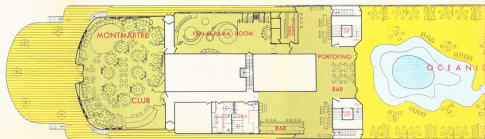
1,388 IN "SUPER COMFORT" ACCOMMODATION: 509 Cabins with 2, 3 and 4 berths, on Belvedere Deck, Continental Deck, Restaurant Deck, Atlantic Deck, Oceanic Deck.

SUN DECK

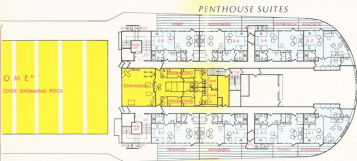


LOUNGES AND PUBLIC ROOMS

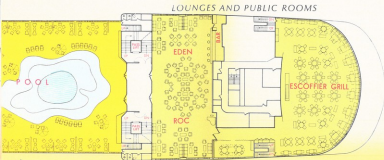
LIDO DECK



MODATION PLAN



- 1 SUN DECK
- 2 LIDO DECK
- 3 BELVEDERE DECK
- 4 RIVIERA DECK
- 5 CONTINENTAL DECK
- 6 RESTAURANT DECK
- 7 ATLANTIC DECK
- 8 OCEANIC DECK



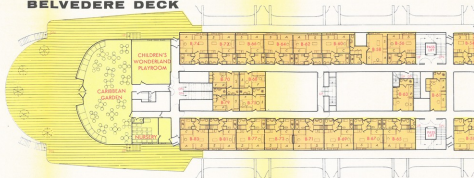
KEY TO DECK PLAN

- A - C FULL SIZE LOWER BED (PERMANENT)
 FULL SIZE LOWER BED BY NIGHT
 S - T CONVERTED INTO UPHOLSTERED SEAT BY DAY
 F FULL SIZE BED BY NIGHT
 RECESSING INTO WALL BY DAY
 P - X FULL SIZE PULLMAN UPPER (PODSING)

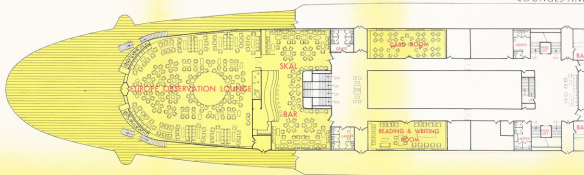
- Chair of drawers
 Dressing table
 Washbasin
 Television set
 Bath
 Shower
 Washstand
 Toilet
 Bidet

STOPS IN ROOMS ARE APPROXIMATE CORRECT

BELVEDERE DECK



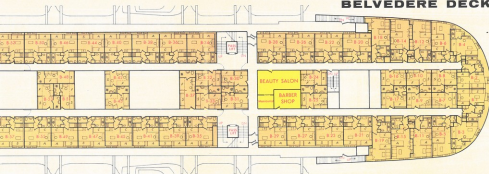
RIVIERA DECK



CRUISE ACCOMMODATION PLAN



BELVEDERE DECK

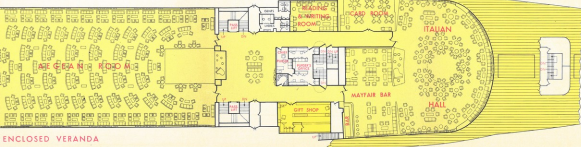


KEY TO DECK PLAN

- A - C Full size lower bed (permanent)
 S - T Full size lower bed by night converted into uphostered sofa by day
 F Full size bed by night recessing into wall by day
 P - X Full size pullman upper (foldings)
- Chest of drawers
 Dressing table
 Bath
 Shower
 Wardrobe
 Television set
 Toilet
 Bidet
- FIGURES IN ROOMS ARE APPROXIMATELY CORRECT

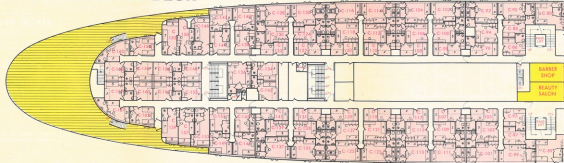
PUBLIC ROOMS

ENCLOSED VERANDA

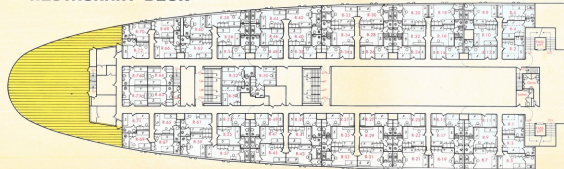


ENCLOSED VERANDA

CONTINENTAL DECK



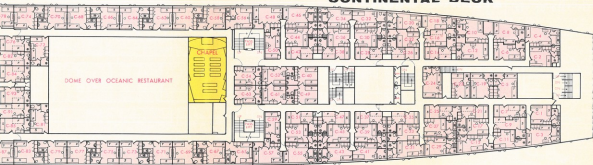
RESTAURANT DECK



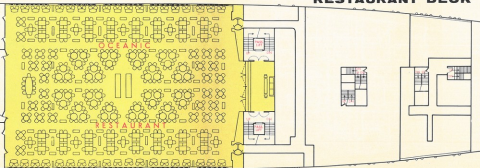
CRUISE ACCOMMODATION PLAN



CONTINENTAL DECK



RESTAURANT DECK

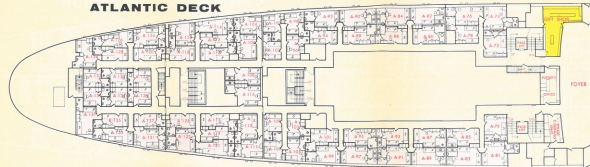


KEY TO DECK PLAN

- A - C FULL SIZE LOWER BED (PERMANENT)
 S - T FULL SIZE LOWER BED BY NIGHT
 CONVERTED INTO UPHOLSTERED
 SOFA BY DAY
 F FULL SIZE BED BY NIGHT
 RECESSED INTO WALL BY DAY
 P - X FULL SIZE PUSHPAN UPPER (FOLDING)
- Chair of dress-
 ing table Bath
 Wardrobe Shower
 Television set Toilet
 Sink

FITTINGS IN ROOMS ARE APPROXIMATELY CORRECT.

ATLANTIC DECK



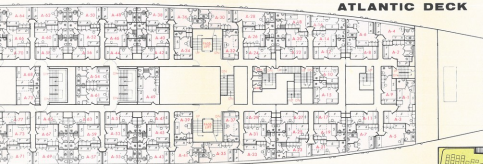
OCEANIC DECK



CRUISE ACCOMMODATION PLAN



ATLANTIC DECK



KEY TO DECK PLAN

A - C FULL SIZE LOWER BED (PERMANENT)

S - T FULL SIZE LOWER BED BY NIGHT
CONVERTED INTO UNFOLDED
SOFA BY DAY

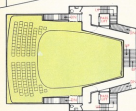
F FULL SIZE BED BY NIGHT
RECESSING INTO WALL BY DAY

P - X FULL SIZE PUSHMAN UPPER (FOLDING)

Chair of dressing table	Bath
Wardrobe	Shower
Television set	Toilet
	Sink

STAIRS IN ROOMS ARE APPROXIMATELY CORRECT

OCEANIC DECK



CINEMA - THEATRE (ON TWO DECKS)



GENERAL INFORMATION

PASSAGE CONTRACT: Cruise passage on the OCEANIC is subject to the terms and conditions shown on the Home Lines Inc., standard Contract Ticket.

CRUISE RATES INCLUDE: Transportation on the OCEANIC; accommodations reserved and paid for; meals and entertainment on board; the services of the Chef and the Landing and embarkation facilities at ports of call.

CRUISE RATES DO NOT INCLUDE: Shore excursions or sightseeing; deck chairs; gratuities; port taxes; liquors, wines or other beverages and other items not included in the regular bill of fare on board.

DEPOSITS: Accommodations are not considered definitely reserved until covered by a deposit or actual Passage Contract Ticket. Minimum deposit required is \$10.00 and payment in full is required not later than three weeks before date of sailing or as desired.

CHILDREN'S FARES: Age on day of sailing governs. When accompanied by two passengers paying full fare and occupying the same cabin, rates for children are as follows:

11 years and over: Full fare—3 years and under 12 yrs.: Half fare
12 months and under 3 yrs.: Quarter fare—Under 12 months: Free.

PASSPORTS AND VISA: **PERMITS:** Passports are not required by U.S. Citizens or by Canadian Citizens and British subjects domiciled in Canada who subsequently return to Canada, but same must be able to submit to United States Immigration Authorities valid evidence of their citizenship and of legal residence. Aliens with permanent residence in the United States must carry their Alien Registration Card (Form I-151). Other aliens must be in possession of valid passports and necessary visas.

SAILING PERMITS: Sailing Permits (Income Tax Clearance) are not required by United States Citizens or by Canadian Citizens or Citizens of United Kingdom residing in Canada, who are in transit. All other aliens must secure a sailing permit before proceeding to the Port for embarkation.

VACCINATION: Not required for these cruises.

BAGGAGE INSURANCE: As the Home Lines' liability for baggage is strictly limited, it is recommended that passengers insure their baggage. The Company cannot under any circumstances accept any liability beyond the amount specified in the Passage Contract Ticket.

VALUABLES: Valuables of any description, such as jewelry, money and documents should be placed in a sealed envelope and delivered to the Chief Purser for deposit at the ship's safe. A receipt will be given for the package but the Company is in no event liable for loss of or injury to or damage to contents and reserves the same at passenger's risk. Generally speaking, it is advisable for cruise members to insure their valuables for the entire cruise.

MEDICAL SERVICE: The OCEANIC carries qualified physicians and nurses.

LAUNDRY: The OCEANIC has a fully equipped Laundry and Valet Service with facilities for handling all requirements during the cruise at rates established by the Company.

BARBER SHOP & BEAUTY SALON: Barber Shop, ladies' hairdressing and manicure salon are available on board.

MAIL, RADIO, CABLE AND TELEPHONE SERVICE: The OCEANIC has ship-to-shore telephone and radio facilities. Mail and cables should be addressed care of: HOME LINES AGENCY INC., 42 Broadway, New York 6, N.Y. or HOME LINES, c/o R. H. Curry & Co., Ltd., 855 First Street, Nassau, Bahamas.

Passenger's name should be clearly legible, as also departure or arrival date of OCEANIC cruise on which passenger is sailing or arriving.

DRINKS ON BOARD: Expenses incurred on board, such as charges for beverages, laundry, telegrams, etc., are to be paid for in U.S. dollars. Cruise members are advised to provide themselves with Travelers' Checks, as personal checks cannot be accepted on board. These checks are available in denominations of \$10, \$20, \$50, \$100 and \$500. Consult your Travel Agent for details.

CLOTHING: Sportswear and swim suits for an aboard ship. Light summer clothing for stay in Nassau. Only knee length shorts permitted in the Bahamas.

Cruising in the evening aboard ship is optional but ladies will enjoy several cocktail drinks.

SHORE EXCURSIONS: Are optional and not included in cruise rates. Shore Excursion Tickets may be purchased at the appropriate Office on board.

STOPOVERS: Stopovers at Nassau may be arranged with privilege of returning to New York within a period of three months. The rate of each port visit will be left the itinerary cruise rate of accommodations assigned.

CIVIL LAND: The Home Lines responsibility does not extend beyond their own vessel and whenever passengers leave it any arrangements made by or for them are at their own risk.

DINING SALON: Seats in the Dining Salon will be assigned by the Maître d'Hotel after embarkation. Precedence will be determined according to the accommodations reserved.

All Rates, Sailing Dates, arrival and departure dates and other information contained in this brochure are subject to change without notice.

OFFICES AND AGENCIES — IN U.S.A. AND CANADA

NEW YORK, N.Y.
BOSTON, Mass.
CHICAGO, Ill.
CLEVELAND, Ohio
HALLAND, N.J.
MIAMI, Fla.
MINNEAPOLIS, Minn.
NEW ORLEANS, La.
PHILADELPHIA, Pa.
SAN FRANCISCO, Cal.
TORONTO, Ont.

PRINTED IN U.S.A. — NATIONAL ASSOCIATION

THE NEW 1/2 oceanic "THE SHIP OF TOMORROW"

7-day Cruises to Nassau

IN THE BAHAMAS



CONSULT YOUR TRAVEL AGENT

1965 Sailings and Rates

THE NEW 1/2 oceanic "THE SHIP OF TOMORROW"

7-day Cruises to Nassau

IN THE BAHAMAS

1965 Sailings and Rates

Home Lines, 42 Broadway
Home Lines, 8 Newbury Square
Home Lines, 35 East Wacker Drive
Home Lines, 1818 Euclid Avenue
Home Lines, 75-73 Upper Master Street
Home Lines, 345 S.E. First Street
Home Lines, 1243 Washington Street West
Home Lines, Queen & Crescent Bldg.
Home Lines, 1128 Walnut Street
Home Lines, 275 First Street
Home Lines, 385 Bay Street